



The news
you need to
know in
5 minutes!

CAMILLA, GEORGIA
www.mitchellemc.com

Stay in the Know

By Tony Tucker

At Mitchell EMC, we are constantly striving to improve our operational efficiency so we can provide the most reliable electric service possible for our consumer-members (*that's you!*).

We rely on data for nearly every aspect of our operations, which is why we need your help. By making sure we have your most accurate and complete contact information, we can continue to provide the high level of service that you expect and deserve. Accurate information enables us to improve customer service and enhance communications for reporting and repairing outages. It also allows co-op members to receive information about other important programs, events and activities.



Up-to-date contact information can potentially speed up the power restoration process during an outage. For example, the phone number you provide is linked to your service address in our outage management system. This means when you call to report an outage, our system recognizes your phone number and matches it with your account location. Accurate information helps our outage management system predict the location and possible cause of an outage, making it easier for our crews to correct the problem.

While we always do our best to maintain service, we occasionally plan outages to update, repair or replace equipment. In these instances, we can provide advance notification to affected members by mail if we have your updated contact information.

Keeping the co-op updated with your information also helps us when there's a question about energy use or billing. In addition, discrepancies on your account can be taken care of promptly if Mitchell EMC has accurate account information.

Many of you have been members of the co-op for years, and it's likely that your account information hasn't been updated for some time. We recognize that many members now use a cell phone as their primary phone service, and we might not have that number in our system.

I want to emphasize that in providing your contact information to the co-op, we will never share this information with any third parties. It is only used by Mitchell EMC to send important information to you. ***Please take a moment to confirm or update your contact information by logging into the online portal at www.mitchellemc.com.*** By doing so, you will be helping us improve service and efficiency so we can better serve you and all members of the co-op.

Three Ways to Electrify Your Lawn Care

By Abby Berry

Spring is just around the corner, and you can practically smell the freshly cut grass. If you're in the market to upgrade your lawn care equipment, you may want to consider electric (or battery-powered) options.

Gas-powered lawn mowers and trimmers may be your go-to, but times they are a changin'. Electric lawn care equipment options are becoming more popular than ever, offering consumers faster charging times, longer battery life and quieter, greener products compared to their gas-powered counterparts. Here are three ways you can electrify your lawn care this spring.

Electric Lawn Mowers

Electric lawn mowers have come a long way over the last few years. Early models required corded connections, which were tricky to manage—but the cord has been cut. Newer cordless electric mowers are certainly more expensive than gas-powered mowers, but much of the upfront cost can be recovered since electricity is a less expensive fuel than gas, and electric engines generally require less maintenance than gas engines. Cordless electric mowers typically range from \$200 to \$500.

Electric mowers are suitable for most lawn care needs, with batteries that typically require about one to two hours to fully charge, and most batteries can run for a full hour. That said, if you have a large yard (half an acre or larger), a gas-powered option may be best to suit your needs.

Electric Trimmers

Cordless electric string trimmers are a great option for most lawns. Traditionally, like lawn mowers, string trimmers have typically been powered by gas. But new versions of electric trimmers are improving and are now considered worthy competitors of gas-powered models.

Cordless electric trimmers are much quieter and easier to use, but most batteries last about 30 to 45 minutes. So, if you have a lot of space to trim, you may want to consider a back-up battery or plan to work in short bursts. If you're interested in purchasing an electric trimmer, the main factors to consider are the battery's life, charge time and power. Costs can vary



depending on your needs, but you can find a quality version for about \$100.

Electric Leaf Blowers

After cutting and trimming your lawn, you'll need to clear off those walkways and patios for the finishing touch. If you don't want to deal with the maintenance of a gas-powered blower or the restraints of a corded blower, a cordless electric version is a great option.

Cordless electric leaf blowers are lightweight and easy to maneuver, but they don't offer quite as much power as gas-powered and corded blowers. If your leaf blowing and clearing needs are minimal, a cordless electric leaf blower can get the job done. Costs for a cordless electric blower vary depending on power and battery quality, but you can purchase a dependable model for about \$150 and up.

If you're looking to electrify your lawn care equipment, be sure to do your homework. Search online for the latest reviews and check trusted websites like ConsumerReports.org. With a little research, you'll be well on your way to Lawn of the Month – with less maintenance, hassle and noise (*and your neighbors will thank you!*).

Abby Berry writes on consumer and cooperative affairs for the National Rural Electric Cooperative Association, the national trade association representing more than 900 local electric cooperatives. From growing suburbs to remote farming communities, electric co-ops serve as engines of economic development for 42 million Americans across 56 percent of the nation's landscape.

Mitchell EMC Scholarship Opportunity Available

Operation Round Up Scholarships:

- Funds for these scholarships are provided by consumer participation in the Operation Round Up program at Mitchell EMC.
- A maximum of fifteen (15) \$1,000 scholarships will be awarded to high school seniors and/or college/technical school students.
- Scholarships are awarded based on "All Around Student Performance" including academic performance, volunteer-



ism, and participation in school, church and community activities. Financial need is also considered.

- Application deadline is **March 1, 2020**.

Please note that the scholarships have different deadlines and should be mailed to different addresses listed on the scholarship form. We encourage students to apply for both scholarships. Applications will be judged by an independent scholarship committee, and winners will be notified by May 1.



PAY YOUR BILL WHERE YOU SHOP

With A **FAST** and **CONVENIENT** way to pay your Mitchell EMC bill through the checkout lane at participating retailers near you.



PAYING YOUR BILL IS EASY WITH CHECKOUT

Get Your Barcode Online at mitchellemc.sedcheckout.com/Lookup

1



Get Your Barcode Online

GET


2



Find Participating Store Locations Near You

FIND

3



Scan Barcode at Register and Pay Your Bill

SCAN

DOLLAR GENERAL

CVS pharmacy



FAMILY DOLLAR



CheckOut
BY PAYGO*

Serving in 14 Southwest Georgia Counties...

Entertainment
by the
Jericho Band
1:00 - 2:00 p.m.



Mitchell Electric Membership Corporation

83rd Annual Meeting *April 17, 2020*

Mitchell EMC Auditorium • 475 Cairo Road, Camilla, GA 31730

Registration 12:30 - 2:00 p.m.

Information Booths 12:30 - 2:00 p.m.

Business Meeting 2:00 p.m.

Energy Efficiency Tip of the Month

Placing hot food in the refrigerator makes the appliance work harder than necessary, using more energy. Allow food to cool down before you place it in the fridge.



DAYLIGHT SAVING TIME REMINDER

Don't forget to spring forward on March 8!
Set your clocks forward by one hour.



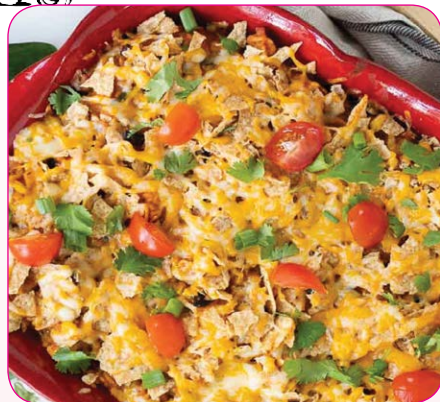
Note: *If you move or no longer have electric service with Mitchell EMC, it is important that members keep their address current, so that future disbursements can be properly mailed. Capital credits are reserved for members even if they move out of the Mitchell EMC service area. Mitchell EMC will make a diligent effort to send a check by mail.*

Statement of Equal Employment Opportunity

All applicants for employment shall be considered and hired on the basis of merit, without regard to race, color, religion, sex (including pregnancy), age, national origin, disability, genetic information, or past or present military status. The employment practices shall ensure equal treatment of all employees, without discrimination as to promotion, discharge, rates of pay, fringe benefits, job training, classification, referral, and other aspects of employment, on the basis of race, color, religion, sex (including pregnancy), national origin, disability, age, genetic information, or past or present military status. M/F/V/DV/D



WATT'S COOKING



Mexican Chicken Casserole

Ingredients:

- 1 cup rice, cooked
- 1 can white meat chicken, crumbled
- 1 can cream of chicken soup
- 2 tablespoons mayonnaise
- 3 tablespoons sour cream
- 2 cups shredded extra sharp cheese, or
3 cups shredded Mexican cheese
- 2 or 3 tablespoons jalapeno diced
peppers (adjust to your liking)

Directions:

Cook rice, mix all ingredients together and pour into a 9x13 baking dish. Bake on 350° for 45 minutes.

Thanks!

to

Olivia Hampton,
Mitchell County, GA,
for sharing this recipe.

Share & Win!

Send us your favorite quick and easy dinner recipes. If your recipe is chosen for print, you can win a

\$25 credit

on your next Mitchell EMC bill.

Send recipes to: Heather Greene, P.O. Box 409,
Camilla, GA 31730 or email to
heather.greene@mitchellemc.com.